

# Upload Presets to PA2

Synq Audio

January 17, 2017

# Chapter 1

## Software installation

Go to the dbxpro web site : <http://dbxpro.com/en/products/driverack-pa2>

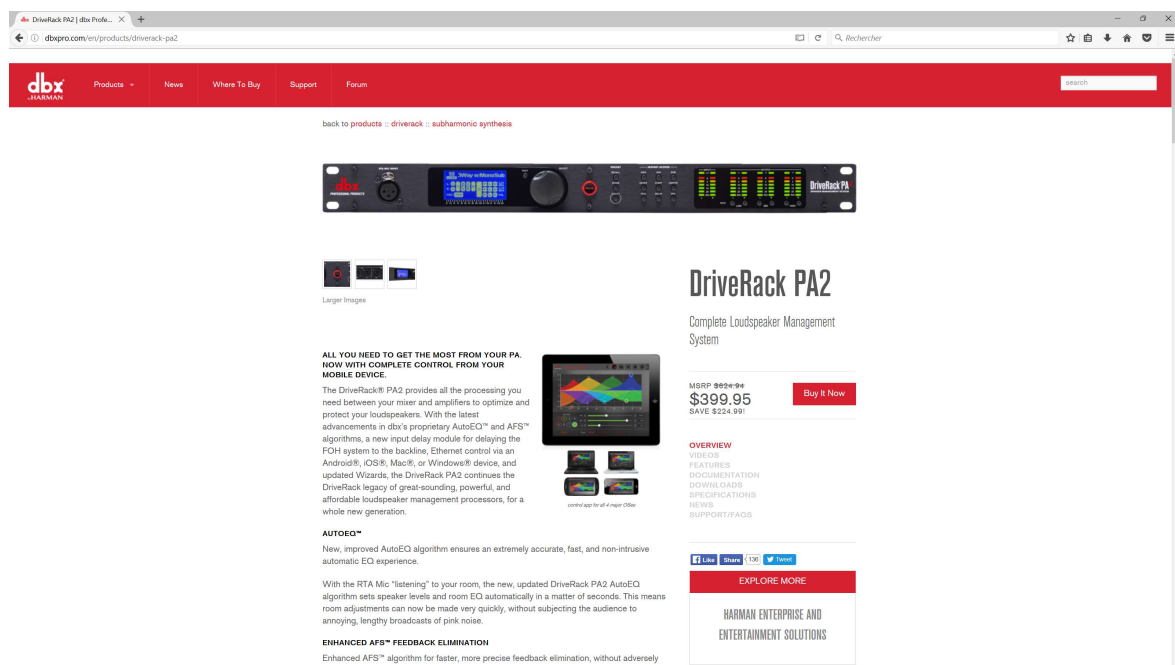


Figure 1.1: dbx website

In the "DOWNLOADS" section, select the PA2 Control App for your system. Download and install it. In this manual, we will use the PA2 Control App v1.0.6 (Windows).

## Chapter 2

# Add presets to local library

After the software installation you need to copy the presets files provided by Synq Audio to a dedicated folder on your computer. After that, at the next start of the PA2 Control App, you will have the presets available on your local library and you will be able to upload it to the Driverack PA2.

Presets files for Driverack PA2 are files without extension.

For example :

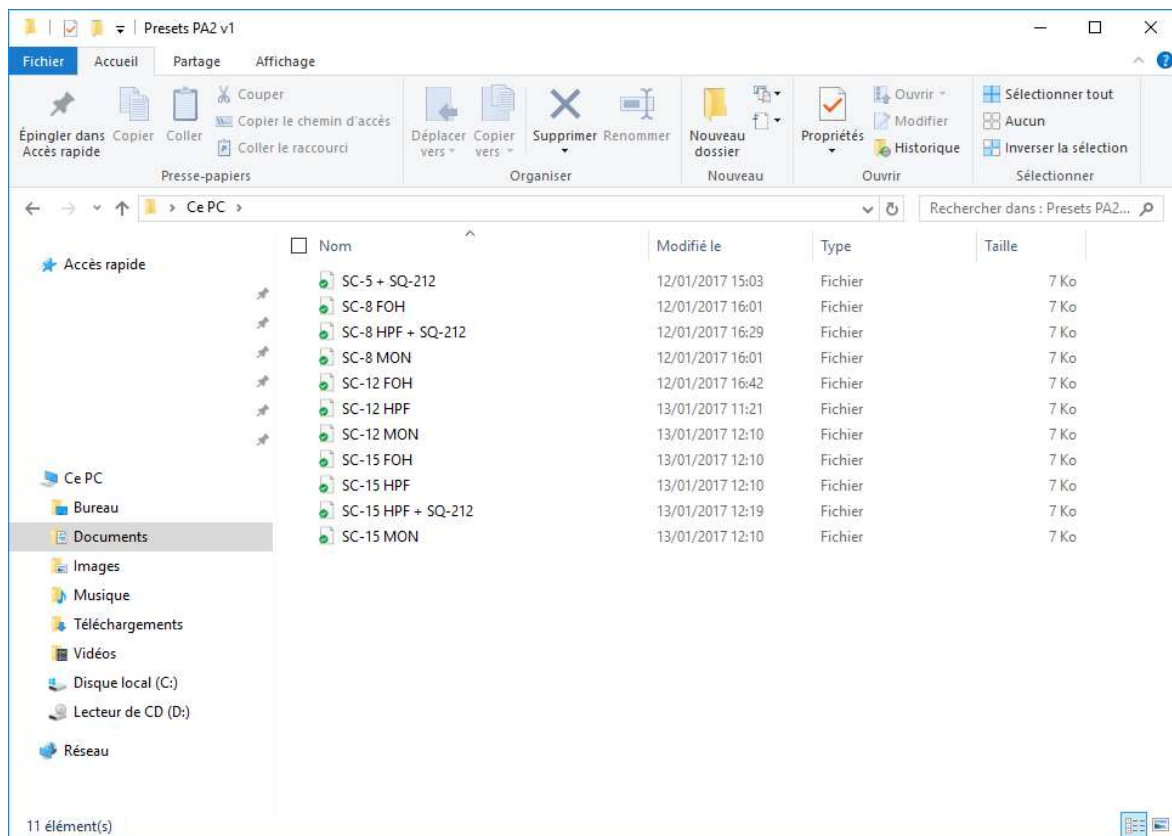


Figure 2.1: Presets files in folder

For our presets names, we use FOH, MON, HPF after speakers reference.  
FOH : Front Of House, the speaker is used on a stand.  
MON : MONitor, the speaker is used on the ground.  
HPF : High Pass Filter, the highpass frequency change to use the speaker with a subwoofer.

The preset files have to be copied in the folder :  
C:\Users\%(USERNAME)\AppData\Local\PA2\Preset\

By default, AppData is an hidden folder. To see it in the explorer :

1. Select the Start button, then select Control Panel -> Appearance and Personalization.
2. Select Folder Options, then select the View tab.
3. Under Advanced settings, select Show hidden files, folders, and drives, and then select OK.

## Chapter 3

# Upload presets to dbx Driverack PA2

You need to connect the Driverack PA2 and your computer to a router with ethernet cables. Start the router and the audio processor. When the presets files are copied in the correct folder, we can start the application :

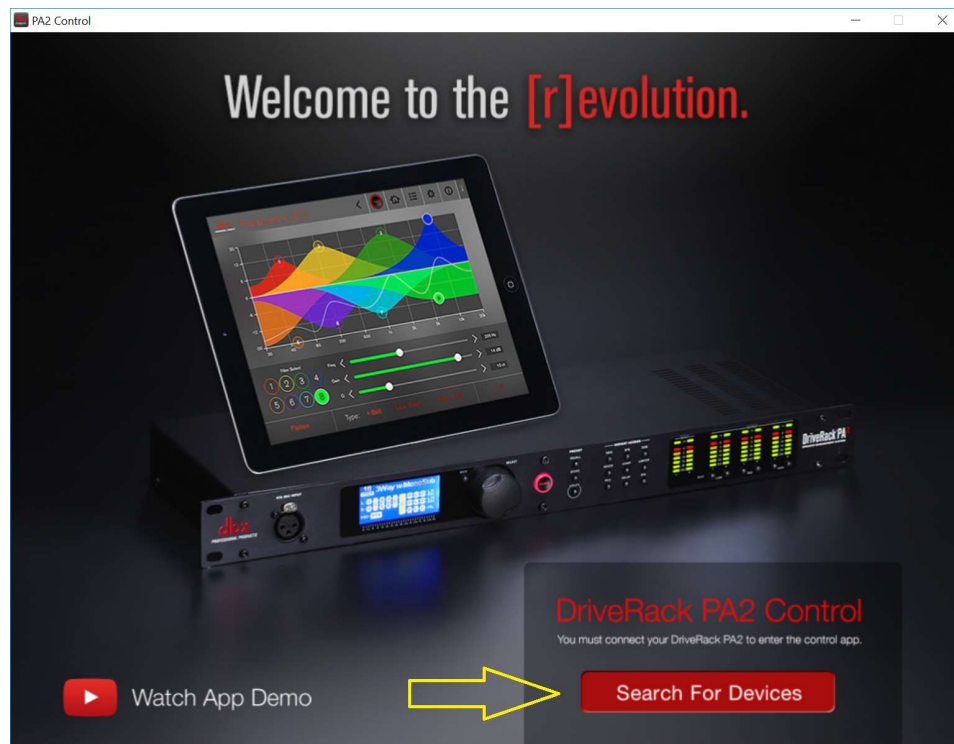


Figure 3.1: Startup screen

Follow the yellow arrow and click "Search For Devices". If your network is setup correctly, the software will be able to discover the Driverack PA2 on the network, and the device will appear in the next screen.

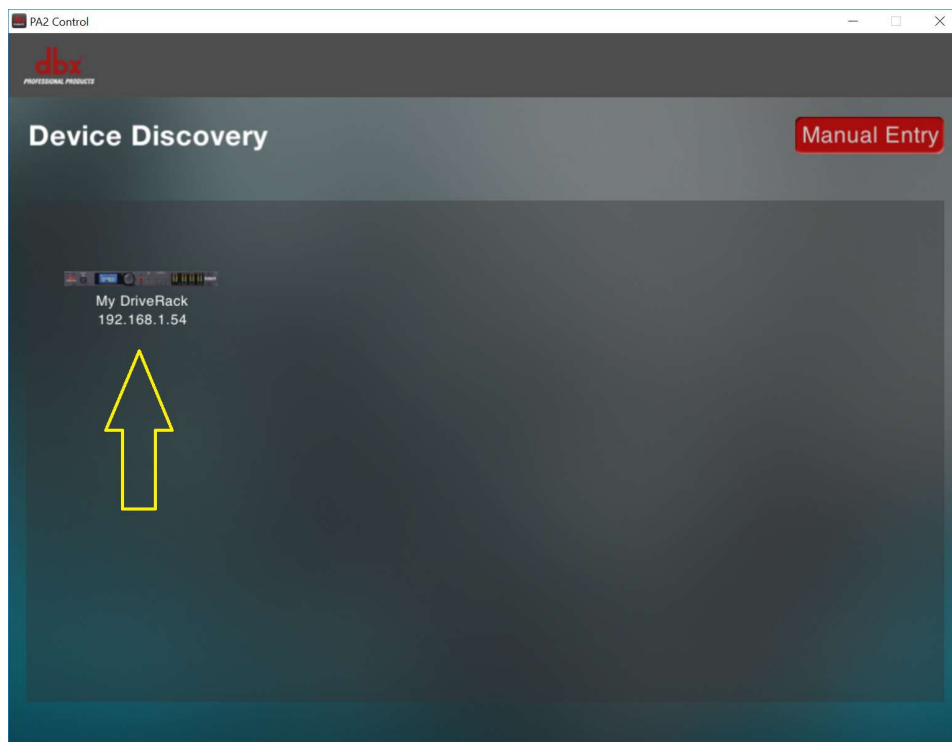


Figure 3.2: Discovered devices

Click on the detected device.

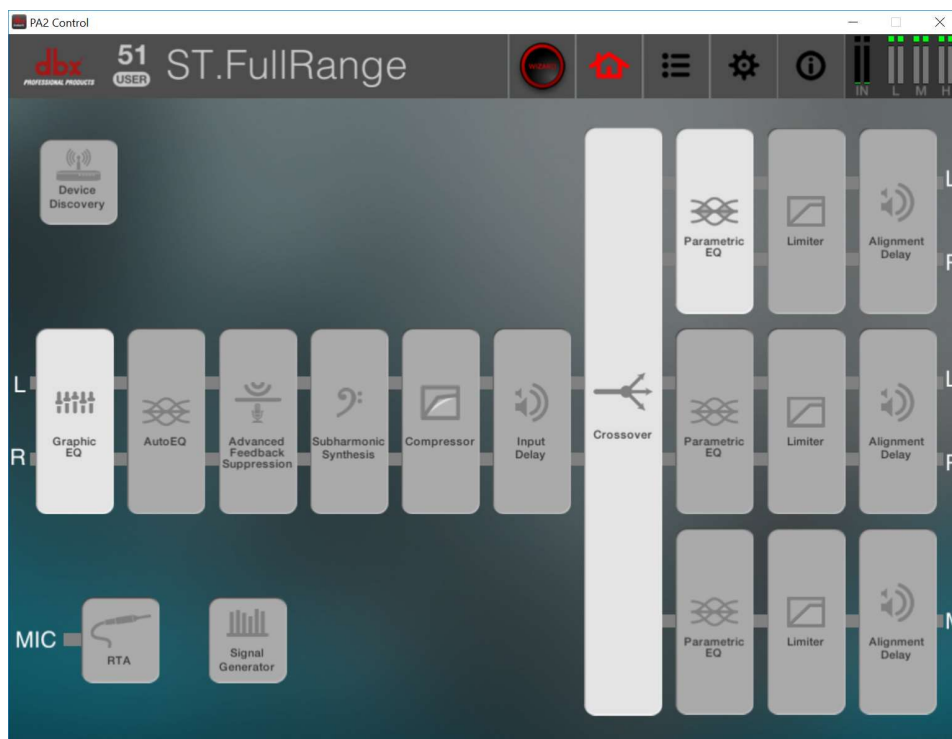


Figure 3.3: Main screen

The control software is now connected to the audio processor. We have to upload the new preset to the device and recall it in the processor. Click on the button (yellow arrow) to open the presets library.

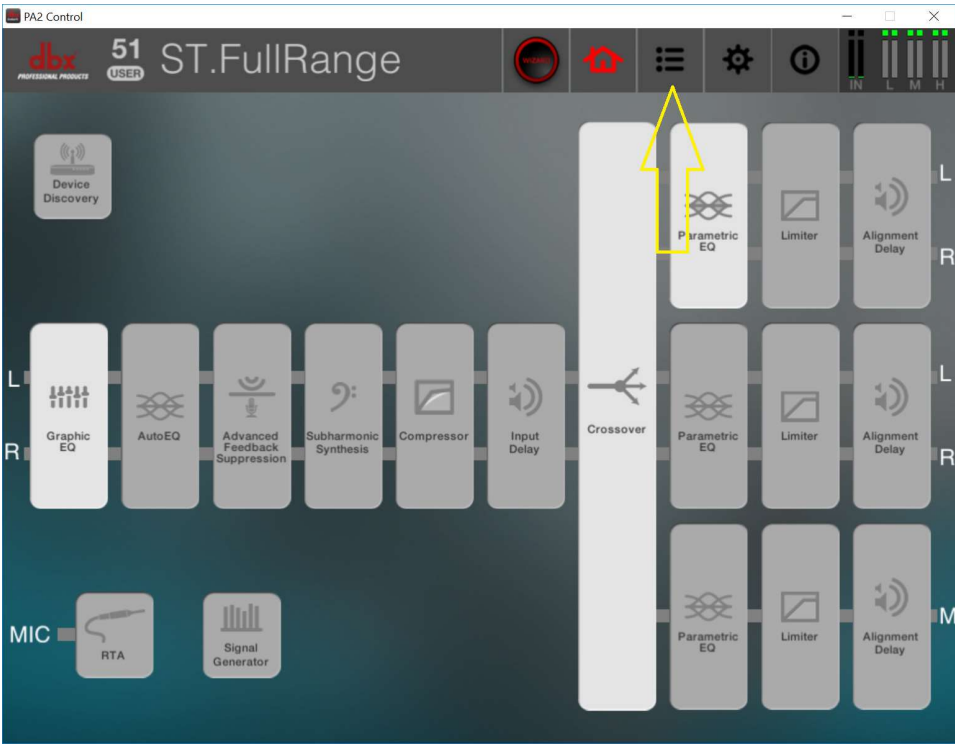


Figure 3.4: Open the presets library

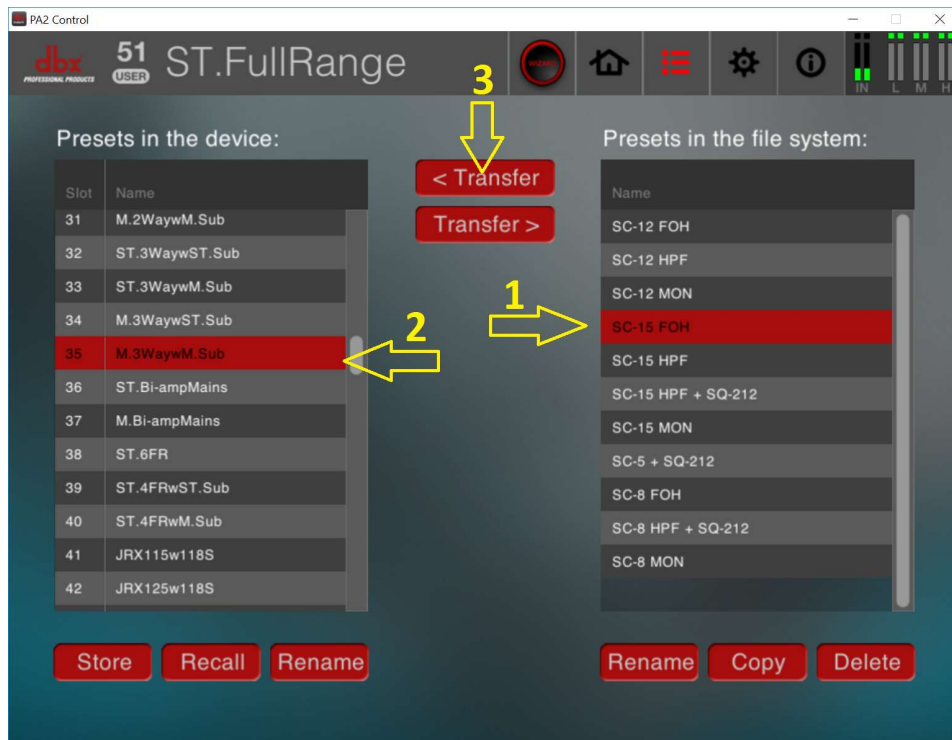


Figure 3.5: Add local preset to the Driverack PA2

On the right panel, there are the presets previously copied in the folder (Chapter 2). All the 100 presets are factory programmed so you have to overwrite presets inside the device library.

Step 1 : select a preset in the file system

Step 2 : select a place in the device

Step 3 : press transfer from the file system to the device.

The preset is now on the device and can be recall without any computer just by pressing the recall button on the front panel and use the rotary encoder to select the presets you need.

For the preset we use the Graphic EQ, the Crossover and the Parametric EQ. All the top speakers (SC-5, SC-8, SC-12, SC-15) output are on HIGH LEFT and HIGH RIGHT output. In case of subwoofer with top speakers, it's output is on the LOW LEFT mono output.



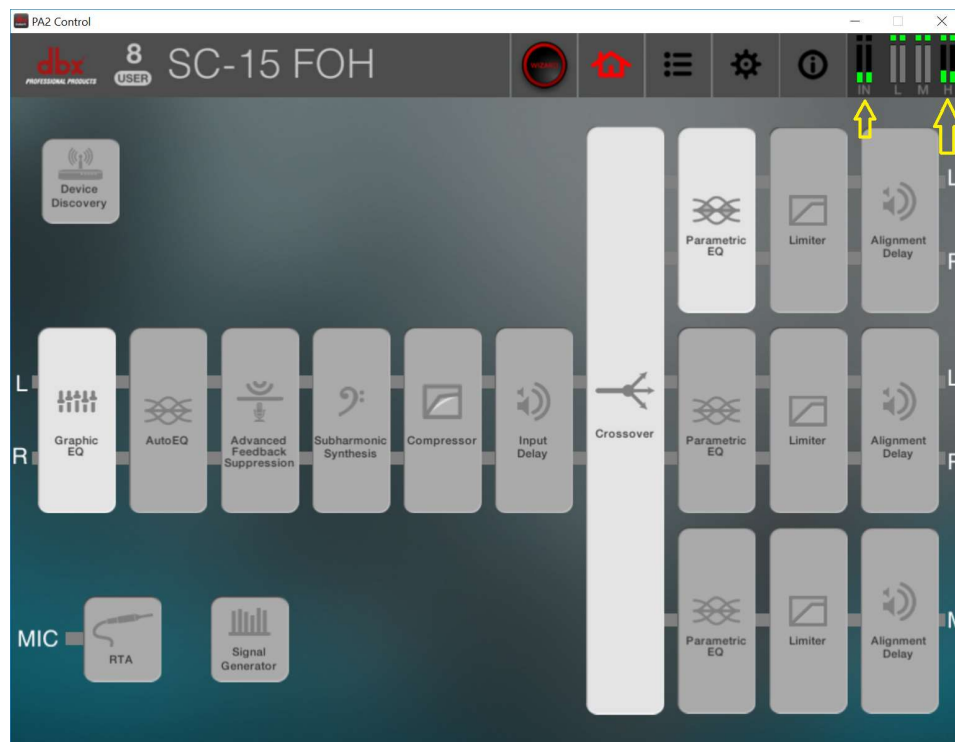


Figure 3.6: Live output level (in and out)